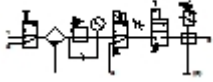


## MSB4-1/4:C1J4D1A1F3-WP

### Service unit combination

Feature	Data/description
Size	4
Series	MS
Actuator lock	Rotary knob with integrated lock
Assembly position	Vertical +/- 5°
Grade of filtration	5 µm
Condensate drain	fully automatic
Design structure	Branching module Start-up valve Pressure sensor On/off valve Filter regulator with pressure gauge
Controller function	with initial pressure compensation with secondary exhaust with return flow Output pressure constant
Bowl guard	Plastic guard
Pressure gauge	with pressure gauge
Pressure control range	4 - 12 bar
Inlet pressure 1	4,5 - 12 bar
Standard nominal flow rate	700 l/min
Operating medium	Filtered, unlubricated compressed air, 40 µm filtration Filtered, lubricated compressed air, 40 µm filtration
Corrosion resistance classification CRC	2
Storage temperature	-10 - 60 °C
Air purity class at output	3.7.- per DIN ISO 8573-1
Medium temperature	5 - 60 °C
Ambient temperature	5 - 60 °C



## MSB4-1/4:C1J4D1A1F3-WP

### Service unit combination

Feature	Data/description
Product weight	2.300 g
Mounting type	with accessories
Pneumatic connection, port 1	G1/4
Pneumatic connection, port 2	G1/4
Pneumatic connection, port 3	G1/4