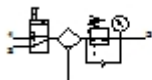


## MSB4-1/4:C1J1-WP

### Service unit combination

Feature	Data/description
Size	4
Series	MS
Actuator lock	Rotary knob with integrated lock
Assembly position	Vertical +/- 5°
Grade of filtration	40 µm
Condensate drain	manual rotary
Design structure	On/off valve Filter regulator with pressure gauge
Controller function	with initial pressure compensation with secondary exhaust with return flow Output pressure constant
Bowl guard	Plastic guard
Pressure gauge	with pressure gauge
Pressure control range	0,5 - 12 bar
Inlet pressure 1	0,8 - 14 bar
Standard nominal flow rate	1.000 l/min
Operating medium	Filtered, unlubricated compressed air, 40 µm filtration Filtered, lubricated compressed air, 40 µm filtration
Corrosion resistance classification CRC	2
Storage temperature	-10 - 60 °C
Air purity class at output	5:7:- per DIN ISO 8573-1
Medium temperature	-10 - 60 °C
Ambient temperature	-10 - 60 °C
Product weight	1.400 g



Data sheet

Part no.: **531061**

Page:2

## MSB4-1/4:C1J1-WP

### Service unit combination

Feature	Data/description
Mounting type	with accessories
Pneumatic connection, port 1	G1/4
Pneumatic connection, port 2	G1/4