

# Pressure gauge

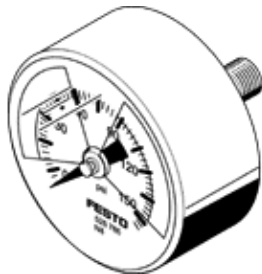
## MA-40-145-N1/8-PSI-E-RG

Part number: 530387

FESTO

With display unit in psi, adjustable red/green range.

This product is only available if ordered from the Festo Corporation, USA.



### Data sheet

| Feature                                 | Value                         |
|---|-------------------------------|
| Indicating range [psi]                  | 0 ... 145 psi                 |
| Conforms to standard                    | EN 837-1                      |
| Nominal size of pressure gauge          | 40                            |
| Design structure                        | Bourdon-tube pressure gauge   |
| Mounting type                           | Line installation             |
| Operating medium                        | Inert gases<br>Neutral fluids |
| Operating pressure                      | 0 ... 145 Psi                 |
| Alternating load factor                 | 0.66                          |
| Measurement accuracy class              | 2,5                           |
| Protection class                        | IP43                          |
| Medium temperature                      | -20 ... 60 °C                 |
| Ambient temperature                     | -20 ... 60 °C                 |
| Materials note                          | Conforms to RoHS              |
| Position of connection                  | Rear side central             |
| Pneumatic connection                    | NPT1/8-27                     |
| Materials in contact with media         | Brass                         |
| Materials information for screw-in stud | Brass                         |
| Materials information, housing          | ABS                           |
| Materials info, viewing window          | PMMA                          |
| Housing colour                          | Black                         |
| Product weight                          | 60 g                          |
| Note on operating and pilot medium      | No oxygen<br>No acetylene     |