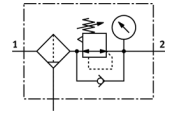


Filter regulator MS6-LFR-1/4-D7-CUM-AS-Z

Part number: 530343

FESTO

12 bar maximum output pressure, 5 µm filter, with pressure gauge, lockable regulator head, metal bowl, manual condensate drain, direction of flow: from right to left.



Data sheet

Feature	Value
Size	6
Series	MS
Actuator lock	Rotary knob with lock with accessories, lockable
Assembly position	Vertical +/- 5°
Grade of filtration	5 µm
Condensate drain	manual rotary
Design structure	Filter regulator with pressure gauge
Max. condensate volume	38 ml
Controller function	Output pressure constant with secondary exhaust
Bowl guard	integrated as metal shell
Pressure gauge	with pressure gauge
Operating pressure	0.8 ... 20 bar
Pressure control range	0.5 ... 12 bar
Max. pressure hysteresis	0.25 bar
Standard nominal flow rate	2,200 l/min
Operating medium	Compressed air to ISO 8573-1:2010 [-:4:-] Inert gases
Corrosion resistance classification CRC	2
Storage temperature	-10 ... 60 °C
Air purity class at output	Compressed air in accordance with ISO8573-1:2010 [6:4:4]
Medium temperature	-10 ... 60 °C
Ambient temperature	-10 ... 60 °C
Product weight	1,087 g
Mounting type	Optional Front panel installation Line installation with accessories
Pneumatic connection, port 1	G1/4
Pneumatic connection, port 2	G1/4
Materials note	Conforms to RoHS
Materials information for seals	NBR
Materials information, housing	Aluminium die cast
Materials information for bowl	Wrought Aluminium alloy
Material information, isolating disc	POM