

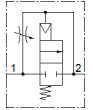
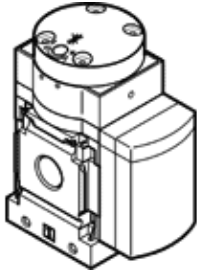
soft-start valve

MS6-DL-3/8

Part number: 529821

FESTO

Pneumatic, for gradual pressure build-up, direction of flow: from left to right.



Data sheet

Feature	Value
Exhaust-air function	throttleable
Type of actuation	pneumatic
Assembly position	Any
Manual override	None
Design structure	Piston seat
Type of reset	mechanical spring
Type of piloting	direct
Pilot air supply	external
Flow direction	non reversible
Valve function	2/2
Operating pressure	4 ... 18 bar
b value	0.48
C value	21.05 l/sbar
Standard nominal flow rate	5,050 l/min
Operating medium	Compressed air in accordance with ISO8573-1:2010 [7:4:4] Inert gases
Note on operating and pilot medium	Lubricated operation possible (subsequently required for further operation)
Corrosion resistance classification CRC	2 - Moderate corrosion stress
PWIS conformity	VDMA24364-B1/B2-L
Food-safe	See Supplementary material information
Medium temperature	-10 ... 60 °C
Ambient temperature	-10 ... 60 °C
Product weight	650 g
Mounting type	Line installation with accessories Optional
Pneumatic connection, port 1	G3/8
Pneumatic connection, port 2	G3/8
Materials note	Conforms to RoHS
Material seals	NBR
Material housing	Aluminium die cast