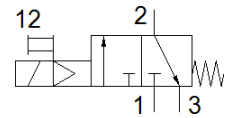
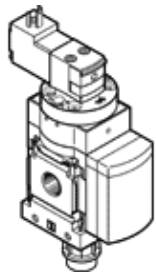


on-off valve MS4-EE-1/4-V110

Part number: 529535

FESTO

Electrical, direction of flow: from left to right.



Data sheet

| Feature | Value |
|---|---|
| Design structure | Piston slide |
| Type of actuation | electrical |
| Exhaust-air function | not throttleable |
| Manual override | detenting Pushing |
| Type of reset | mechanical spring |
| Type of piloting | Piloted |
| Valve function | 3/2 closed, monostable |
| Operating pressure | 4 ... 14 bar |
| C value | 9.5 l/sbar |
| b value | 0.44 |
| Standard nominal flow rate | 2,000 l/min |
| Duty cycle | 100 % |
| Characteristic coil data | 110 V AC: 50/60 Hz, pick-up power 3 VA, holding power 2.4 VA |
| Operating medium | Compressed air in accordance with ISO8573-1:2010 [7:4:4] Inert gases |
| Note on operating and pilot medium | Lubricated operation possible (subsequently required for further operation) |
| Corrosion resistance classification CRC | 2 - Moderate corrosion stress |
| Materials note | Conforms to RoHS |
| PWIS conformity | VDMA24364-B1/B2-L |
| Medium temperature | -10 ... 60 °C |
| Protection class | IP65 |
| Ambient temperature | -10 ... 60 °C |
| Food-safe | See Supplementary material information |
| Mounting type | Line installation with accessories Optional |
| Assembly position | Any |
| Flow direction | non reversible |
| Product weight | 273 g |
| Pneumatic connection, port 1 | G1/4 |
| Pneumatic connection, port 2 | G1/4 |
| Pneumatic connection, port 3 | G1/4 |
| Pilot air supply | Internal |
| Electrical connection | Plug pattern type C to EN 175301-803 Plug Per DIN EN 175301-803 Cubic design |
| Material seals | NBR |
| Material housing | Aluminium die cast |