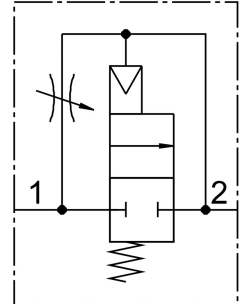


Soft start valve MS4-DL-1/8

Part number: 529533

FESTO



Data sheet

| Feature | Value |
|------------------------------------|--|
| Exhaust-air function | With flow control option |
| Type of actuation | Pneumatic |
| Mounting position | optional |
| Manual override | None |
| Design | Piston seat |
| Type of reset | Mechanical spring |
| Type of piloting | Direct |
| Pilot air supply | External |
| Flow direction | Non-reversible |
| Valve function | 2/2 |
| Operating pressure | 4 bar...14 bar |
| b value | 0.5 |
| C value | 4.6 l/sbar |
| Standard nominal flow rate | 1000 l/min |
| Operating medium | Compressed air to ISO 8573-1:2010 [7:4:4] Inert gases |
| Note on operating and pilot medium | Lubricated operation possible (in which case lubricated operation will always be required) |
| Corrosion resistance class CRC | 2 - Moderate corrosion stress |
| LABS (PWIS) conformity | VDMA24364-B1/B2-L |
| Suitable for use with food | See supplementary material information |
| Media temperature | -10 °C...60 °C |
| Ambient temperature | -10 °C...60 °C |
| Product weight | 213 g |
| Type of mounting | Either: In-line installation With accessories |
| Pneumatic connection, port 1 | G1/8 |

| Feature | Value |
|------------------------------|--------------------|
| Pneumatic connection, port 2 | G1/8 |
| Note on materials | RoHS-compliant |
| Material seals | NBR |
| Material housing | Die-cast aluminium |