

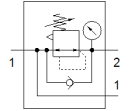
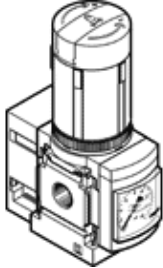
pressure regulator

MS4-LRB-1/4-D5-AS-BD

Part number: 529474

FESTO

For manifold assembly, angled outlet block with QS push-in connector, 4 bar maximum output pressure, with pressure gauge, P2 connection at rear.



Data sheet

Feature	Value
Size	4
Series	MS
Actuator lock	Rotary knob with lock with accessories, lockable
Assembly position	Any
Design structure	directly-controlled diaphragm regulator with looped-through compressed air supply
Controller function	Output pressure constant with secondary exhaust with return flow
Pressure gauge	with pressure gauge
Operating pressure	0.8 ... 14 bar
Pressure regulation range	0.3 ... 4 bar
Max. pressure hysteresis	0.25 bar
Standard nominal flow rate	650 l/min
Operating medium	Compressed air in accordance with ISO8573-1:2010 [7:4:4] Inert gases
Note on operating and pilot medium	Lubricated operation possible (subsequently required for further operation)
Corrosion resistance classification CRC	2 - Moderate corrosion stress
PWIS conformity	VDMA24364-B1/B2-L
Storage temperature	-10 ... 60 °C
Food-safe	See Supplementary material information
Medium temperature	-10 ... 60 °C
Ambient temperature	-10 ... 60 °C
Product weight	222 g
Mounting type	Front panel installation Line installation with accessories Optional
Pneumatic connection, port 1	G1/4
Pneumatic connection, port 2	QS-8
Materials note	Conforms to RoHS
Material of connecting plate	Aluminium die cast
Material control panel	PA POM
Material seals	NBR
Material housing	Aluminium die cast
Material membrane	NBR