

filter regulator

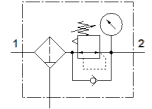
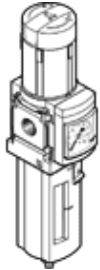
MS6-LFR-1/2-D6-CRM-AS

Part number: 529176

★ Core product range

FESTO

7 bar maximum output pressure, 5 µm filter, with pressure gauge, lockable regulator head, plastic bowl with plastic bowl guard, manual condensate drain, direction of flow: from left to right.



Data sheet

| Feature | Value |
|---|--|
| Size | 6 |
| Series | MS |
| Actuator lock | Rotary knob with lock with accessories, lockable |
| Assembly position | Vertical +/- 5° |
| Grade of filtration | 5 µm |
| Condensate drain | manual rotary |
| Design structure | Filter regulator with pressure gauge |
| Max. condensate volume | 38 ml |
| Controller function | Output pressure constant with secondary exhaust |
| Bowl guard | Plastic guard |
| Pressure gauge | with pressure gauge |
| Operating pressure MPa | 0.08 ... 2 MPa |
| Operating pressure | 0.8 ... 20 bar |
| Pressure regulation range | 0.3 ... 7 bar |
| Max. pressure hysteresis (MPa) | 0.025 MPa |
| Max. pressure hysteresis | 0.25 bar 3.625 psi |
| Standard nominal flow rate | 5,600 l/min |
| Operating medium | Compressed air to ISO 8573-1:2010 [-:4:-] Inert gases |
| Corrosion resistance classification CRC | 2 - Moderate corrosion stress |
| PWIS conformity | VDMA24364-B1/B2-L |
| Storage temperature | -10 ... 60 °C |
| Food-safe | See Supplementary material information |
| Air purity class at output | Compressed air in accordance with ISO8573-1:2010 [6:4:4] |
| Medium temperature | -10 ... 60 °C |
| Ambient temperature | -10 ... 60 °C |
| Product weight | 875 g |
| Mounting type | Front panel installation Line installation with accessories Optional |
| Pneumatic connection, port 1 | G1/2 |
| Pneumatic connection, port 2 | G1/2 |
| Materials note | Conforms to RoHS |
| Material control panel | PA POM |
| Material seals | NBR |
| Material filter | PE |
| Material housing | Aluminium die cast |
| Material membrane | NBR |
| Material bowl | PC |
| Material separating plate | POM |