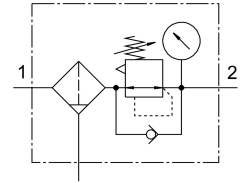


# Filter regulator MS4-LFR-1/4-D7-ERM-AS

Part number: 529156

FESTO



## Data sheet

| Feature   | Value   |
|---|---|
| Size  | 4   |
| Series  | MS  |
| Actuator lock   | Rotary knob with detent<br>can be closed with accessories                       |
| Mounting position                                     | Vertical +/-5°  |
| Grade of filtration                                   | 40 µm   |
| Condensate drain                                      | Manually rotating   |
| Design  | Filter regulator with pressure gauge  |
| Max. condensate volume                                | 19 ml   |
| Controller function                                   | Output pressure constant<br>With secondary venting<br>With return flow function |
| Bowl guard  | Plastic bowl guard  |
| Pressure gauge (ANALOG) or Pressure display (DIGITAL) | With pressure gauge   |
| Operating pressure                                    | 0.08 MPa...1.4 MPa<br>0.8 bar...14 bar  |
| Pressure regulation range                             | 0.5 bar...12 bar  |
| Max. pressure hysteresis                              | 0.25 bar  |
| Standard nominal flow rate                            | 1500 l/min  |
| Operating medium                                      | Compressed air to ISO 8573-1:2010 [-:4:-]<br>Inert gases                        |
| Corrosion resistance class CRC                        | 2 - Moderate corrosion stress   |
| LABS (PWIS) conformity                                | VDMA24364-B1/B2-L   |
| Storage temperature                                   | -10 °C...60 °C  |
| Suitable for use with food                            | See supplementary material information  |
| Air purity class at output                            | Compressed air to ISO 8573-1:2010 [7:4:4]                                       |
| Media temperature                                     | -10 °C...60 °C  |
| Ambient temperature                                   | -10 °C...60 °C  |
| Product weight  | 275 g   |
| Type of mounting                                      | Either:<br>Front panel mounting<br>In-line installation<br>With accessories     |

| <b>Feature</b>               | <b>Value</b>       |
|------------------------------|--------------------|
| Pneumatic connection, port 1 | G1/4               |
| Pneumatic connection, port 2 | G1/4               |
| Note on materials            | RoHS-compliant     |
| Material sub-base            | Die-cast aluminium |
| Material control panel       | PA<br>POM          |
| Material seals               | NBR                |
| Material filter              | PE                 |
| Material housing             | Die-cast aluminium |
| Material membrane            | NBR                |
| Material bowl                | PC                 |
| Material separating plate    | POM                |