

Solenoid valve

CPPSC1-M1H-M-H-QB

Part number: 527375

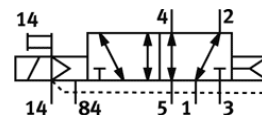
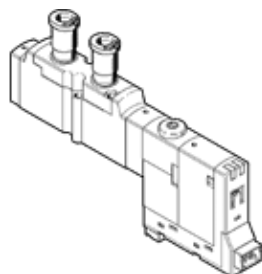
Product to be discontinued

FESTO

For valve terminal CPA-SC, QS push-in connector on top, with plug connection at rear.

This product is only available if ordered from the Festo Corporation, USA.

Type to be discontinued. Available until 2014. See Support Portal for alternative products.



Data sheet

Feature	Value
Valve function	5/2 monostable
Type of actuation	electrical
Standard nominal flow rate	180 l/min
Operating pressure	-0.9 ... 10 bar
Design structure	Piston slide
Type of reset	Air spring
Protection class	IP20
Authorisation	c UL us - Recognized (OL)
Exhaust-air function	throttleable
Sealing principle	soft
Assembly position	Any
Manual override	detenting Pushing
Type of piloting	Piloted
Flow direction	reversible
Switching position indicator	Yes
Pilot pressure	3 ... 8 bar
b value	0.36
C value	0.725 l/sbar
Switching time off	20 ms
Switching time on	10 ms
Characteristic coil data	24V DC: 1W
Operating medium	Compressed air in accordance with ISO8573-1:2010 [7:4:4]
Note on operating and pilot medium	Lubricated operation possible (subsequently required for further operation)
CE mark (see declaration of conformity)	to EU directive for EMC
Corrosion resistance classification CRC	1
Medium temperature	-5 ... 50 °C
Sound pressure level	95 dB(A)
Pilot medium	Compressed air in accordance with ISO8573-1:2010 [7:4:4]
Ambient temperature	-5 ... 50 °C
Product weight	40 g
Electrical connection	3-pin Plug
Mounting type	with through hole
Pneumatic connection, port 1	Sub-base
Pneumatic connection, port 2	QS-5/32
Pneumatic connection, port 3	Sub-base
Pneumatic connection, port 4	QS-5/32
Pneumatic connection, port 5	Sub-base
Materials information for seals	FPM HNBR NBR
Materials information, housing	Aluminium die cast