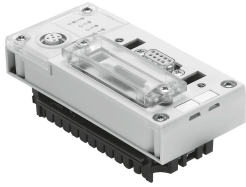


# Bus node CPX-FB23-24

Part number: 526176

FESTO



## Data sheet

Feature	Value
Protocol	CC-Link
Dimensions (W x L x H)	(incl. interlinking block) 50 x 107 x 50 mm
Product weight	115 g
Ambient temperature	-5 °C...50 °C
Storage temperature	-20 °C...70 °C
Degree of protection	IP65 IP67
Corrosion resistance class CRC	1 - Low corrosion stress
LABS (PWIS) conformity	VDMA24364-B2-L
Material housing	PA-reinforced PC
LED display, product-specific	M: Modify, parameterisation PL: Load supply PS: Electronics supply, sensor supply SF: System fault
LED display, bus-specific	Error: Communication error RD: Receive data Run: Communication status SD: Send data
Device-specific diagnostics	Channel-oriented and module-oriented diagnostics Undervoltage of modules Diagnostic memory
Operator controls	DIL switch
Field bus interface	Sub-D socket, 9-pin Sub-D plug connector, for self-assembly Screw terminal strip, IP20
Max. address volume, inputs	14 Byte 32 Byte 64 Byte
Note on inputs	14 bytes on Rx (F23) 32 bytes on RWr (F23) 64 bytes on Rx, RWr (F24)
Max. address volume, outputs	14 Byte 32 Byte 64 Byte

Feature	Value
Note on outputs	14 bytes with Ry (F23) 32 bytes with RWw (F23) 64 bytes on Ry, RWw (F24)
Parameterisation	Diagnostic behaviour Fail-safe response Forcing of channels Signal setup System parameter
Baud rate	156 ... 10000 kbit/s
Additional functions	System status can be mapped using process data Additional diagnostic interface for operator units
Operational voltage range DC	18 V...30 V
Nominal operating voltage DC	24 V
Intern power consumption nominal operating voltage	Typ. 70 mA