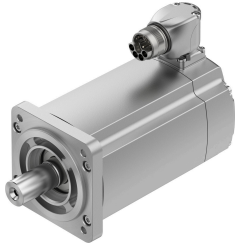


Servo motor EMMT-AS-80-M-HS-RM

Part number: 5255438

FESTO



Data sheet

Feature	Value
Ambient temperature	-15 °C...40 °C
Note on ambient temperature	Up to 80°C with derating of -1.5% per degree Celsius
Max. installation height	4000 m
Note on max. installation height	As of 1,000 m: only with derating of -1.0% per 100 m
Storage temperature	-20 °C...70 °C
Relative air humidity	0 - 90%
Conforms to standard	IEC 60034
Temperature class as per EN 60034-1	F
Max. winding temperature	155 °C
Rating class as per EN 60034-1	S1
Temperature monitoring	Digital motor temperature transmission via EnDat® 2.2
Motor type to EN 60034-7	IM B5 IM V1 IM V3
Mounting position	optional
Degree of protection	IP40
Note on degree of protection	IP40 for motor shaft without rotary shaft seal IP65 for motor shaft with rotary shaft seal IP67 for motor housing including connection components
Concentricity, coaxiality, axial runout to DIN SPEC 42955	N
Balance quality	G 2.5
Detent torque	<1.0% of the peak torque
Bearing lifetime under nominal conditions	20000 h
Interface code, motor out	80P
Electrical connection 1, connection type	Hybrid plug
Electrical connection 1, connector system	M23x1
Electrical connection 1, number of connections/cores	15
Pollution degree	2
Note on materials	RoHS-compliant
Corrosion resistance class CRC	0 - No corrosion stress
LABS (PWIS) conformity	VDMA24364 zone III
Vibration resistance	Transport application test with severity level 2 to FN 942017-4 and EN 60068-2-6

Feature	Value
Shock resistance	Shock test with severity level 2 to FN 942017-5 and EN 60068-2-27
Approval	RCM trademark c UL us - Recognized (OL)
CE mark (see declaration of conformity)	To EU EMC Directive To EU Low Voltage Directive In accordance with EU RoHS Directive
CE marking (see declaration of conformity)	To UK instructions for EMC To UK RoHS instructions To UK regulations for electrical equipment
Certificate issuing authority	UL E342973
Nominal operating voltage DC	680 V
Type of winding switch	Star inside
Number of pole pairs	5
Standstill torque	2.6 Nm
Nominal torque	2.2 Nm
Peak torque	6.4 Nm
Nominal rotary speed	3000 rpm
Max. rotational speed	6800 rpm
Max. mechanical speed	14000 rpm
Nominal power rating of motor	690 W
Continuous stall current	2.6 A
Nominal motor current	2.2 A
Peak current	9 A
Motor constant	1 Nm/A
Standstill torque constant	1.17 Nm/A
Voltage constant, phase-to-phase	70.7 mV/min
Phase-phase winding resistance	7.43 Ohm
Phase-phase winding inductance	31.8 mH
Winding longitudinal inductivity Ld (phase)	19.4 mH
Winding cross inductivity Lq (phase)	23.8 mH
Electric time constant	6.4 ms
Thermal time constant	45 min
Thermal resistance	0.78 K/W
Measuring flange	250 x 250 x 15 mm, steel
Total mass moment of inertia of output	1.035 kgcm ²
Product weight	2640 g
Permissible axial shaft load	120 N
Permissible radial shaft load	620 N
Rotor position sensor	Absolute multi-turn encoder
rotor position sensor, manufacturer designation	EQI 1131
rotor position sensor, absolute detectable revolutions	4096
Rotor position encoder interface	EnDat@ 22
Rotor position sensor, encoder measuring principle	Inductive
rotor position sensor, DC operating voltage	5 V
rotor position sensor, DC operating voltage range	3.6 V...14 V
rotor position sensor, position values per revolution	524288
Rotor position transducer resolution	19 bit
rotor position sensor, system accuracy of angle measurement	-120 arcsec...120 arcsec
Mean time to failure (MTTF), subcomponent	190 years, rotor position sensor
Energy efficiency	ENEFF (CN) / Class 2