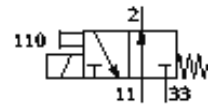
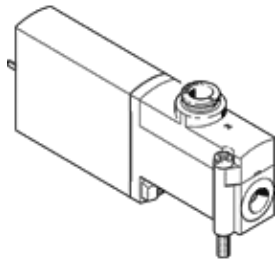


Solenoid valve

MHP4-M1H-3/20-QS-8

Part number: 525202

FESTO



Data sheet

Feature	Value
Valve function	3/2 open, monostable
Type of actuation	electrical
Width	18 mm
Standard nominal flow rate	400 l/min
Operating pressure	-0.9 ... 8 bar
Design structure	Pressure-relieved poppet valve
Type of reset	mechanical spring
Protection class	IP65
Authorisation	c UL us - Recognized (OL)
Nominal size	4 mm
Grid dimension	24 mm
Exhaust-air function	throttleable
Sealing principle	soft
Assembly position	Any
Manual override	Pushing
Type of piloting	direct
Flow direction	reversible with restrictions
Operating pressure, reversible	-0.9 ... 0 bar
Maximum switching frequency	120 Hz
Switching time off	5 ms
Switching time on	10.5 ms
Duty cycle	100%
Characteristic coil data	24V DC: 5,6W
Permissible voltage fluctuation	+/- 10 %
Operating medium	Filtered, unlubricated compressed air, 40 µm filtration Filtered, lubricated compressed air, 40 µm filtration
Corrosion resistance classification CRC	2
Medium temperature	-5 ... 40 °C
Ambient temperature	-5 ... 40 °C
Product weight	270 g
Electrical connection	Plug 2-pin
Mounting type	On PR manifold
Pneumatic connection, 11	Sub-base
Pneumatic connection, port 2	QS-8
Pneumatic connection, 33	Sub-base
Materials note	Free of copper and PTFE
Materials information for seals	HNBR NBR
Materials information, housing	Zinc die-casting coated
Screw material data	Steel Galvanised