

stem actuated valve

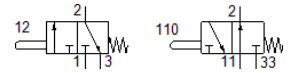
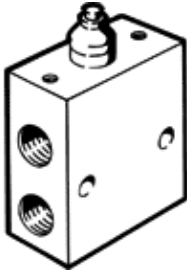
V/O-3-1/8

Part number: 4938

FESTO

Depending on the choice of connection, normally-open or normally-closed function.

This type is suitable for vacuum.



Data sheet

Feature	Value
Valve function	3/2 open/closed, monostable
Type of actuation	mechanical
Standard nominal flow rate	140 l/min
Operating pressure	-0.95 ... 8 bar
Design structure	Piston seat
Nominal size	3.5 mm
Type of piloting	direct
Operating medium	Compressed air in accordance with ISO8573-1:2010 [-:-:-]
Note on operating and pilot medium	Lubricated operation possible (subsequently required for further operation)
PWIS conformity	VDMA24364-B1/B2-L
Ambient temperature	-10 ... 60 °C
Actuating force	28 N
Actuating force for normally closed	37.53 N
Product weight	90 g
Mounting type	with through hole
Pneumatic connection, port 1	G1/8
Pneumatic connection, port 2	G1/8
Pneumatic connection, port 3	G1/8
Material seals	NBR
Material housing	Anodised aluminium