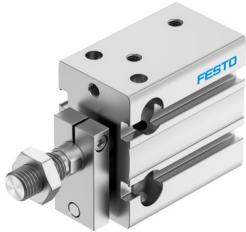


# Compact cylinder DPDM-Q-25-5-PA

Part number: 4840824

FESTO



## Data sheet

| Feature  | Value  |
|--|--|
| Stroke   | 5 mm   |
| Piston diameter  | 25 mm  |
| Cushioning   | Elastic cushioning rings/plates at both ends   |
| Mounting position  | optional   |
| Mode of operation  | Double-acting  |
| Design   | Piston<br>Piston rod<br>Profile barrel   |
| Position detection   | Via proximity switch   |
| Variants   | Piston rod at one end  |
| Protection against torque/guide                              | Guide rod with yoke  |
| Operating pressure   | 0.1 MPa...0.8 MPa<br>1 bar...8 bar   |
| Operating medium   | Compressed air to ISO 8573-1:2010 [7:4:4]  |
| Note on operating and pilot medium                           | Lubricated operation possible (in which case lubricated operation will always be required) |
| Corrosion resistance class CRC                               | 2 - Moderate corrosion stress  |
| LABS (PWIS) conformity                                       | VDMA24364-B2-L   |
| Cleanroom class  | Class 6 according to ISO 14644-1   |
| Ambient temperature  | -10 °C...80 °C   |
| Theoretical force at 0.6 MPa (6 bar, 87 psi)                 | 295 N  |
| Theoretical force at 0.6 MPa (6 bar, 87 psi), return stroke  | 247 N  |
| Theoretical force at 0.6 MPa (6 bar, 87 psi), advance stroke | 295 N  |
| Moving mass for 0 mm stroke                                  | 76 g   |
| Additional moving mass per 10 mm stroke                      | 8 g  |
| Basic weight for 0 mm stroke                                 | 223 g  |
| Additional weight per 10 mm stroke                           | 35 g   |
| Type of mounting   | Either:<br>With through-hole<br>Via female thread  |
| Pneumatic connection   | M5   |
| Note on materials  | RoHS-compliant   |
| Material cover   | Wrought aluminium alloy  |

| <b>Feature</b>      | <b>Value</b>                     |
|---------------------|----------------------------------|
| Material seals      | TPE-U(PU)                        |
| Material housing    | Anodised wrought aluminium alloy |
| Material piston rod | High-alloy stainless steel       |