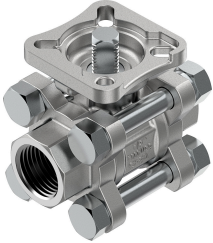


# Ball valve VZBE-1/2-T-63-T-2-F0304-V15V15

Part number: 4809117

FESTO



## Data sheet

Feature	Value
Design	2-way ball valve
Type of actuation	Mechanical
Sealing principle	Soft
Mounting position	optional
Type of mounting	In-line installation
Connection Process valve	1/2 NPT

Feature	Value
Switching position indicator	Slot direction = flow direction
Flange hole pattern	F0304
Inside diameter	15 mm
Nominal size DN	15
Valve function	2/2
Flow direction	Reversible
Nominal pressure PN	63
Breakaway torque at differential pressure, nominal pressure, process valve PN	7 Nm
Based on standard	ASME B1.20.1 ISO 5211
Medium	Vapour Compressed air to ISO 8573-1:2010 [-::-] Inert gases Water Neutral fluids
Media temperature	-20 °C...200 °C
Flow rate Kv	32 m <sup>3</sup> /h
Note on materials	RoHS-compliant
LABS (PWIS) conformity	VDMA24364 zone III
Material housing	Stainless steel casting
Material number housing	1.4408
Material seat seal	PTFE
Material seals	FPM PTFE
Material ball	Stainless steel casting
Material number ball	1.4408
Material shaft	High-alloy stainless steel
Material number shaft	1.4401
Product weight	560 g
Approval	CRN
Corrosion resistance class CRC	4 - Very high corrosion stress