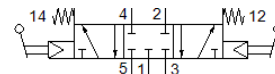
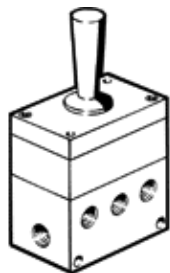


toggle lever valve

H-5/3-1/4

Part number: 4577

FESTO



Data sheet

Feature	Value
Valve function	5/3 closed
Type of actuation	manual
Standard nominal flow rate	680 l/min
Operating pressure MPa	0.2 ... 1 MPa
Operating pressure	2 ... 10 bar
Type of reset	mechanical spring
Nominal size	7 mm
Sealing principle	soft
Type of piloting	Piloted
Flow direction	non reversible
PWIS conformity	VDMA24364-B1/B2-L
Ambient temperature	-10 ... 60 °C
Product weight	1,060 g
Pneumatic connection, port 1	G1/4
Pneumatic connection, port 2	G1/4
Pneumatic connection, port 3	G1/4