

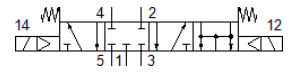
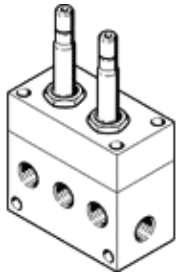
solenoid valve

MC-5/4-1/4

Part number: 4576
 Product to be discontinued



Type to be discontinued. Available until 2022. See Support Portal for alternative products.



Data sheet

Feature	Value
Valve function	5/4 closed
Type of actuation	electrical
Operating pressure MPa	0.2 ... 1 MPa
Operating pressure	2 ... 10 bar
Design structure	Poppet seat
Type of reset	mechanical spring
Sealing principle	soft
Manual override	None
Type of piloting	Piloted
Medium temperature	-10 ... 60 °C
Ambient temperature	-5 ... 40 °C
Product weight	1,270 g
Pneumatic connection, port 1	G1/4
Pneumatic connection, port 2	G1/4
Pneumatic connection, port 3	G1/4
Pneumatic connection, port 4	G1/4
Pneumatic connection, port 5	G1/4