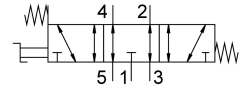


# Selector valve VHEF-ES-P53E-M-N18

Part number: 4414812

FESTO



## Data sheet

| Feature                            | Value                                                                                      |
|------------------------------------|--------------------------------------------------------------------------------------------|
| Valve function                     | 5/3 exhausted                                                                              |
| Type of actuation                  | Manual                                                                                     |
| Construction width                 | 20 mm                                                                                      |
| Standard nominal flow rate         | 530 l/min                                                                                  |
| pneumatic working port             | 1/8 NPT                                                                                    |
| Operating pressure                 | -0.095 MPa...1 MPa<br>-0.95 bar...10 bar                                                   |
| Design                             | Piston gate valve                                                                          |
| Type of reset                      | Mechanical spring                                                                          |
| Nominal size                       | 5.2 mm                                                                                     |
| Exhaust-air function               | With flow control option                                                                   |
| Instructions on use                | Actuate manually only                                                                      |
| Sealing principle                  | Soft                                                                                       |
| Mounting position                  | optional                                                                                   |
| Type of piloting                   | Direct                                                                                     |
| Flow direction                     | Reversible                                                                                 |
| lap                                | Positive overlap                                                                           |
| Max. switching frequency           | 0.5 Hz                                                                                     |
| Explosion protection               | Zone 1 (ATEX)<br>Zone 2 (ATEX)<br>Zone 21 (ATEX)<br>Zone 22 (ATEX)                         |
| Operating medium                   | Compressed air to ISO 8573-1:2010 [7:-:-]                                                  |
| Note on operating and pilot medium | Lubricated operation possible (in which case lubricated operation will always be required) |
| Corrosion resistance class CRC     | 1 - Low corrosion stress                                                                   |
| LABS (PWIS) conformity             | VDMA24364-B1/B2-L                                                                          |
| Media temperature                  | -10 °C...60 °C                                                                             |
| Ambient temperature                | -10 °C...60 °C                                                                             |
| Actuating torque                   | 0.7 Nm                                                                                     |
| Max. force on actuation            | 200 N                                                                                      |
| Max. lateral force on actuation    | 200 N                                                                                      |
| Product weight                     | 235 g                                                                                      |

| <b>Feature</b>               | <b>Value</b>                                         |
|------------------------------|------------------------------------------------------|
| Type of mounting             | Either:<br>Front panel mounting<br>With through-hole |
| Pneumatic connection, port 1 | 1/8 NPT                                              |
| Pneumatic connection, port 2 | 1/8 NPT                                              |
| Pneumatic connection, port 3 | 1/8 NPT                                              |
| Pneumatic connection, port 4 | 1/8 NPT                                              |
| Pneumatic connection, port 5 | 1/8 NPT                                              |
| Note on materials            | RoHS-compliant                                       |
| Material cover               | PA-reinforced                                        |
| Material seals               | NBR                                                  |
| Material housing             | Anodised wrought aluminium alloy                     |
| Material lever               | PA-reinforced                                        |