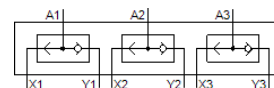
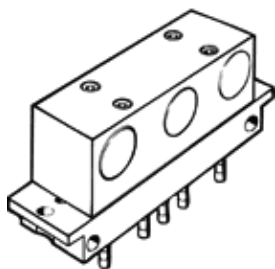


OR block OS-PK-3-6/3

Part number: 4232

FESTO



Data sheet

Feature	Value
Valve function	OR function
Pneumatic connection, port 1	PK-3
Pneumatic connection, port 2	PK-3
Mounting type	Front panel installation
Standard nominal flow rate	100 l/min
Operating pressure	1.6 ... 8 bar
Ambient temperature	-10 ... 60 °C
Material housing	POM
Operating medium	Compressed air in accordance with ISO8573-1:2010 [7:-:-]
Nominal size	2.5 mm
Assembly position	Any
Note on operating and pilot medium	Lubricated operation possible (subsequently required for further operation)
PWIS conformity	VDMA24364-B1/B2-L
Medium temperature	-10 ... 60 °C
Product weight	90 g
Pneumatic connection, port 3	PK-3
Material seals	NBR