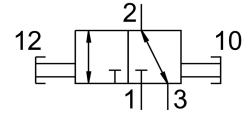
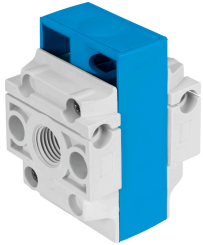


On/off valve HE-1/4-DB-MINI

Part number: 3563687

FESTO



Data sheet

| Feature | Value |
|------------------------------------|--|
| Series | DB |
| Size | Mini |
| Grid dimension | 44 mm |
| Design | On/off valve |
| Type of actuation | Manual |
| Sealing principle | Soft |
| Exhaust-air function | Without flow control option |
| Actuator lock | Padlock (optional) |
| Manual override | None |
| Type of piloting | Direct |
| Valve function | 3/2 double solenoid |
| Operating pressure | 0 MPa...1 MPa 0 bar...10 bar |
| C value | 6.3 l/sbar |
| b value | 0.8 |
| Standard nominal flow rate | 2300 l/min |
| Standard nominal flow rate 2-3 | 700 l/min |
| Operating medium | Compressed air to ISO 8573-1:2010 [7:4:4] Inert gases |
| Note on operating and pilot medium | Lubricated operation not possible |
| Corrosion resistance class CRC | 1 - Low corrosion stress |
| Note on materials | RoHS-compliant |
| LABS (PWIS) conformity | VDMA24364-B1/B2-L |
| Media temperature | -5 °C...50 °C |
| Ambient temperature | -5 °C...50 °C |
| Type of mounting | In-line installation With through-hole |
| Product weight | 66 g |
| Pneumatic connection, port 1 | G1/4 |
| Pneumatic connection, port 2 | G1/4 |
| Air purity class at output | Compressed air to ISO 8573-1:2010 [7:4:4] Inert gases |

| Feature | Value |
|-----------------------|---------------|
| Material piston slide | POM |
| Material seals | FPM |
| Material housing | PA-reinforced |