

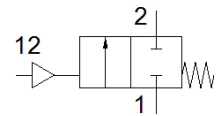
angle seat valve

VZXF-L-M22C-M-A-G2-430-H3B1-50-4-EX4

Part number: 3540292

FESTO

Pneumatically actuated angle seat valve in red brass. Over seat version, safety position closed, G thread, Atex, nominal width 2".



Data sheet

Feature	Value
Design structure	Poppet valve with piston actuator
Type of actuation	pneumatic
Sealing principle	soft
Assembly position	Any
Mounting type	Line installation
Line connection	G2 threaded collar to DIN ISO 228
Nominal size	43 mm
Valve function	2/2 closed, monostable
Flow direction	non reversible
Medium pressure	0 ... 4 bar
Nominal pressure of process valve	16
Exhaust-air function	not throttleable
Type of reset	mechanical spring
Type of piloting	With external control
Pneumatic connection	Female thread G1/8
Operating pressure	6 ... 10 bar
Medium	Vapour Inert gases Filtered compressed air, degree of filtration 200 µm
Flow direction	Above valve seat, for gaseous media
Operating medium	Compressed air in accordance with ISO8573-1:2010 [7:4:4]
Max. viscosity	600 mm ² /s
Medium temperature	-10 ... 80 °C
Ambient temperature	-10 ... 60 °C
Flow rate Kv	28 m ³ /h
Materials note	Contains PWIS substances Conforms to RoHS
Material process valve housing	Gunmetal (red brass)
Material number, process valve housing	CC499K
Material spindle seal	NBR
Material seat seal	PTFE
Product weight	2,800 g
CE mark (see declaration of conformity)	to EU directive pressure devices to EU directive explosion protection (ATEX)
ATEX category Gas	II 2G
ATEX category Dust	II 2D
Explosion ignition protection type Gas	Ex h IIC T6...T3 Gb X
Explosion ignition protection type Dust	Ex h IIIC T80°C...T200°C Db X
Explosion-proof ambient temperature	-10°C ≤ Ta ≤ +60°C
Corrosion resistance classification CRC	1 - Low corrosion stress
Material drive housing	Brass