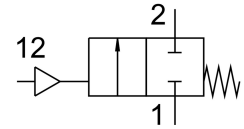


Angle seat valve VZXF-L-M22C-M-B-G2-450-M1-V4B2T-50-3

Part number: 3540146

FESTO



Data sheet

| Feature | Value |
|------------------------|---|
| Design | Poppet valve with piston drive |
| Type of actuation | Pneumatic |
| Sealing principle | Soft |
| Mounting position | optional |
| Type of mounting | In-line installation |
| Line connection | Threaded coupling G2 to DIN ISO 228 |
| Nominal size | 45 mm |
| Valve function | 2/2-way, closed, monostable |
| Flow direction | Non-reversible |
| Medium pressure | 0 MPa...0.3 MPa 0 bar...3 bar |
| Nominal pressure PN | 40 |
| Exhaust-air function | Without flow control option |
| Type of reset | Mechanical spring |
| Type of piloting | Externally controlled |
| Pneumatic connection | Female thread G1/8 |
| Operating pressure | 0.6 MPa...1 MPa 6 bar...10 bar 87 psi...145 psi |
| Medium | Vapour Mineral oil-based hydraulic fluid Inert gases Mineral oil Water Filtered compressed air, grade of filtration 200 µm Neutral fluids |
| Direction of flow | Below valve seat, for gaseous and liquid media |
| Operating medium | Compressed air to ISO 8573-1:2010 [7:4:4] |
| Max. viscosity | 600 mm ² /s |
| Media temperature | -40 °C...200 °C |
| Ambient temperature | -10 °C...60 °C |
| Flow rate Kv | 19.5 m ³ /h |
| Note on materials | RoHS-compliant |
| LABS (PWIS) conformity | VDMA24364 zone III |

| Feature | Value |
|--|--|
| Material process valve housing | Stainless steel casting |
| Material number process valve housing | 1.4408 |
| Material spindle seal | PTFE |
| Material seat seal | PTFE |
| Product weight | 3500 g |
| CE mark (see declaration of conformity) | In accordance with EU Pressure Equipment Directive |
| CE marking (see declaration of conformity) | to UK Pressure Equipment Regulations |
| Corrosion resistance class CRC | 2 - Moderate corrosion stress |
| Material drive housing | Nickel-plated brass |