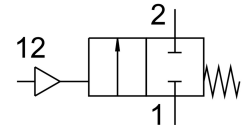


Angle seat valve VZXF-L-M22C-M-A-G114-310-M1-V4B2T-50-9

Part number: 3539815

FESTO



Data sheet

Feature	Value
Design	Poppet valve with piston drive
Type of actuation	Pneumatic
Sealing principle	Soft
Mounting position	optional
Type of mounting	In-line installation
Line connection	Threaded coupling G1 1/4 to DIN ISO 228
Nominal size	31 mm
Valve function	2/2-way, closed, monostable
Flow direction	Non-reversible
Medium pressure	0 MPa...0.9 MPa 0 bar...9 bar
Nominal pressure PN	40
Exhaust-air function	Without flow control option
Type of reset	Mechanical spring
Type of piloting	Externally controlled
Pneumatic connection	Female thread G1/8
Operating pressure	0.6 MPa...1 MPa 6 bar...10 bar 87 psi...145 psi
Medium	Vapour Inert gases Filtered compressed air, grade of filtration 200 µm
Direction of flow	Above valve seat, for gaseous media
Operating medium	Compressed air to ISO 8573-1:2010 [7:4:4]
Max. viscosity	600 mm ² /s
Media temperature	-40 °C...200 °C
Ambient temperature	-10 °C...60 °C
Flow rate Kv	18.5 m ³ /h
Note on materials	RoHS-compliant
LABS (PWIS) conformity	VDMA24364 zone III
Material process valve housing	Stainless steel casting
Material number process valve housing	1.4408
Material spindle seal	PTFE

Feature	Value
Material seat seal	PTFE
Product weight	2200 g
CE mark (see declaration of conformity)	In accordance with EU Pressure Equipment Directive
CE marking (see declaration of conformity)	to UK Pressure Equipment Regulations
Corrosion resistance class CRC	2 - Moderate corrosion stress
Material drive housing	Nickel-plated brass