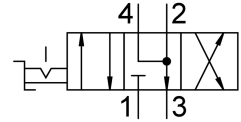


# Hand lever valve VHER-H-B43E-G14

Part number: 3515082

FESTO



## Data sheet

| Feature                            | Value                                                                                                                                  |
|------------------------------------|----------------------------------------------------------------------------------------------------------------------------------------|
| Valve function                     | 4/3 exhausted                                                                                                                          |
| Type of actuation                  | Manual                                                                                                                                 |
| Construction width                 | 66 mm                                                                                                                                  |
| Standard nominal flow rate         | 1150 l/min                                                                                                                             |
| pneumatic working port             | G1/4                                                                                                                                   |
| Operating pressure                 | 0 bar...10 bar                                                                                                                         |
| Note on operating pressure         | Vacuum operation at connection 3 only<br>In the case of dual-pressure operation, the pressure at port 1 must be higher than at port 3. |
| Design                             | Rotary gate valve                                                                                                                      |
| Nominal size                       | 8 mm                                                                                                                                   |
| Exhaust-air function               | With flow control option                                                                                                               |
| Instructions on use                | Actuate manually only                                                                                                                  |
| Sealing principle                  | Hard                                                                                                                                   |
| Type of piloting                   | Direct                                                                                                                                 |
| Flow direction                     | Non-reversible                                                                                                                         |
| Overlap                            | yes                                                                                                                                    |
| Switching position indicator       | With accessories                                                                                                                       |
| Operating medium                   | Compressed air to ISO 8573-1:2010 [7:4:4]                                                                                              |
| Note on operating and pilot medium | Lubricated operation possible (in which case lubricated operation will always be required)                                             |
| Corrosion resistance class CRC     | 2 - Moderate corrosion stress                                                                                                          |
| LABS (PWIS) conformity             | VDMA24364-B1/B2-L                                                                                                                      |
| Media temperature                  | -20 °C...80 °C                                                                                                                         |
| Ambient temperature                | -20 °C...80 °C                                                                                                                         |
| Actuating torque                   | 2 Nm                                                                                                                                   |
| Product weight                     | 560 g                                                                                                                                  |
| Type of mounting                   | Either:<br>Front panel mounting<br>With through-hole                                                                                   |
| Pneumatic connection, port 1       | G1/4                                                                                                                                   |
| Pneumatic connection, port 2       | G1/4                                                                                                                                   |
| Pneumatic connection, port 3       | G1/4                                                                                                                                   |

| <b>Feature</b>               | <b>Value</b>       |
|------------------------------|--------------------|
| Pneumatic connection, port 4 | G1/4               |
| Note on materials            | RoHS-compliant     |
| Material seals               | NBR                |
| Material housing             | Die-cast aluminium |
| Material lever               | Die-cast aluminium |