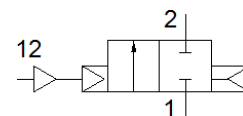


pneumatic valve VLX-2-3/4-MS-NPT

Part number: 34925

FESTO

2/2-way function, pneumatically actuated, brass version.



Data sheet

Feature	Value
Design structure	Diaphragm valve
Type of actuation	pneumatic
Sealing principle	soft
Assembly position	Any
Mounting type	Line installation
Process valve connection	NPT3/4
Nominal size	20 mm
Valve function	2/2 closed, monostable
Flow direction	non reversible
Medium pressure	1 ... 10 bar
Exhaust-air function	not throttleable
Type of reset	Air spring
Type of piloting	Piloted
Auxiliary pilot air port 12	M5
Pilot medium	Compressed air in accordance with ISO8573-1:2010 [7:-:-]
Medium	Filtered compressed air, degree of filtration 200 µm
Medium temperature	-10 ... 80 °C
Ambient temperature	-10 ... 60 °C
Standard nominal flow rate	10,500 l/min
PWIS conformity	VDMA24364-B1/B2-L
Material housing	Brass
Material screws	High alloy steel, non-corrosive
Material number, screw	1.4301
Product weight	1,135 g