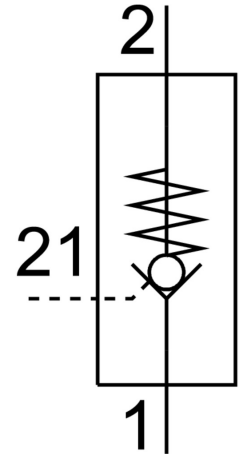


Piloted check valve HGL-1/4-NPT

Part number: 34878

FESTO



Data sheet

Feature	Value
Valve function	Piloted non-return function
Pneumatic connection, port 1	1/4 NPT
Pneumatic connection, port 2	1/4 NPT
Type of mounting	Screw-in
Standard nominal flow rate	0 l/min...490 l/min
Operating pressure	0.03 MPa...1 MPa 0.3 bar...10 bar
Pilot pressure	0.18 MPa...1 MPa 1.8 bar...10 bar 26.1 psi...145 psi
Ambient temperature	-20 °C...80 °C
Operating medium	Compressed air to ISO 8573-1:2010 [7:4:4]
Note on operating and pilot medium	Lubricated operation possible (in which case lubricated operation will always be required)
LABS (PWIS) conformity	VDMA24364-B1/B2-L
Media temperature	-20 °C...80 °C
Note on materials	RoHS-compliant
Material seals	NBR