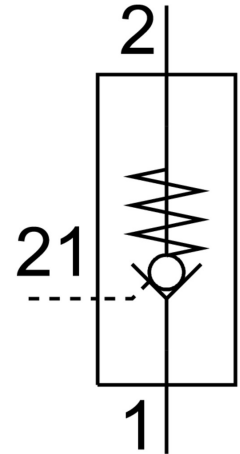


# Piloted check valve HGL-1/8-NPT

Part number: 34877

FESTO



## Data sheet

Feature	Value
Valve function	Piloted non-return function
Pneumatic connection, port 1	1/8 NPT
Pneumatic connection, port 2	1/8 NPT
Type of mounting	Screw-in
Standard nominal flow rate	0 l/min...260 l/min
Operating pressure	0.03 MPa...1 MPa 0.3 bar...10 bar
Pilot pressure	0.2 MPa...1 MPa 2 bar...10 bar 29 psi...145 psi
Ambient temperature	-20 °C...80 °C
Operating medium	Compressed air to ISO 8573-1:2010 [7:4:4]
Note on operating and pilot medium	Lubricated operation possible (in which case lubricated operation will always be required)
LABS (PWIS) conformity	VDMA24364-B1/B2-L
Media temperature	-20 °C...80 °C
Note on materials	RoHS-compliant