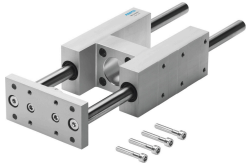


Guide unit FENG-40-200-KF

Part number: 34502

FESTO



Data sheet

Feature	Value
Size	40
Stroke	200 mm
Mounting position	optional
Guide	Recirculating ball bearing guide
Design	Guidance
Explosion protection	Zone 1 (ATEX) Zone 2 (ATEX) Zone 21 (ATEX) Zone 22 (ATEX)
LABS (PWIS) conformity	VDMA24364-B2-L
Ambient temperature	-20 °C...80 °C
Max. force F _y	1000 N
Max. force F _y static	1260 N
Max. force F _z	1000 N
Max. force F _z static	1260 N
Max. moment M _x	44 Nm
Max. torque M _x static	55 Nm
Max. moment M _y	52 Nm
Max. torque M _y static	65 Nm
Max. moment M _z	52 Nm
Max. torque M _z static	65 Nm
Displacement force	15 N
Product weight	3010 g
Type of mounting	Via female thread
Note on materials	RoHS-compliant
Material guide component	Tempered steel
Material housing	Anodised wrought aluminium alloy
Material yoke plate	Anodised wrought aluminium alloy