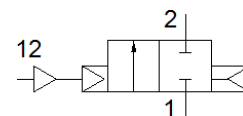


# pneumatic valve VLX-2-3/4-MS

Part number: 34435

FESTO

2/2-way function, pneumatically actuated, brass version.



## Data sheet

| Feature                    | Value                                                    |
|----------------------------|----------------------------------------------------------|
| Design structure           | Diaphragm valve                                          |
| Type of actuation          | pneumatic                                                |
| Sealing principle          | soft                                                     |
| Assembly position          | Any                                                      |
| Mounting type              | Line installation                                        |
| Process valve connection   | G3/4                                                     |
| Nominal size               | 20 mm                                                    |
| Valve function             | 2/2 closed, monostable                                   |
| Flow direction             | non reversible                                           |
| Medium pressure            | 1 ... 10 bar                                             |
| Exhaust-air function       | not throttleable                                         |
| Type of reset              | Air spring                                               |
| Type of piloting           | Piloted                                                  |
| Pilot medium               | Compressed air in accordance with ISO8573-1:2010 [7:-:-] |
| Medium                     | Filtered compressed air, degree of filtration 200 µm     |
| Medium temperature         | -10 ... 80 °C                                            |
| Ambient temperature        | -10 ... 60 °C                                            |
| Standard nominal flow rate | 10,500 l/min                                             |
| PWIS conformity            | VDMA24364-B1/B2-L                                        |
| Material housing           | Brass                                                    |
| Material screws            | High alloy steel, non-corrosive                          |
| Material number, screw     | 1.4301                                                   |
| Product weight             | 1,135 g                                                  |