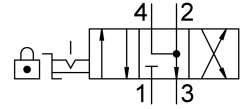


Hand lever valve VHER-P-H-B43E-B-M5

Part number: 3410682

FESTO



Data sheet

Feature	Value
Valve function	4/3 exhausted
Type of actuation	Manual
Construction width	30 mm
Standard nominal flow rate	260 l/min
pneumatic working port	M5
Operating pressure	0 bar...10 bar
Note on operating pressure	Vacuum operation at connection 3 only In the case of dual-pressure operation, the pressure at port 1 must be higher than at port 3.
Design	Rotary gate valve
Nominal size	4 mm
Exhaust-air function	With flow control option
Instructions on use	Actuate manually only
Actuator lock	can be closed with accessories
Sealing principle	Hard
Type of piloting	Direct
Flow direction	Non-reversible
Overlap	yes
Switching position indicator	With accessories
Explosion protection	Zone 2 (ATEX) Zone 22 (ATEX)
Operating medium	Compressed air to ISO 8573-1:2010 [7:4:4]
Note on operating and pilot medium	Lubricated operation possible (in which case lubricated operation will always be required)
Corrosion resistance class CRC	2 - Moderate corrosion stress
LABS (PWIS) conformity	VDMA24364-B1/B2-L
Media temperature	-20 °C...80 °C
Ambient temperature	-20 °C...80 °C
Actuating torque	0.5 Nm
Product weight	80 g
Type of mounting	Either: Front panel mounting With through-hole

Feature	Value
Pneumatic connection, port 1	M5
Pneumatic connection, port 2	M5
Pneumatic connection, port 3	M5
Pneumatic connection, port 4	M5
Note on materials	RoHS-compliant
Material seals	NBR
Material housing	PA
Material lever	PA