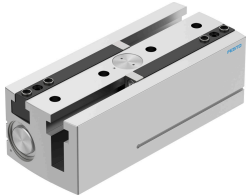


Parallel gripper HGPL-63-150-A-B

Part number: 3361494

FESTO



Data sheet

Feature	Value
Size	63
Stroke per gripper jaws	150 mm
Max. replacement accuracy	0.2 mm
Max. angular gripper jaw backlash ax, ay	0.2 deg
Max. gripper jaw backlash Sz	0.05 mm
Rotationally symmetrical	0.2 mm
Repetition accuracy, gripper	0.03 mm
Number of gripper jaws	2
Drive system	Pneumatic
Mounting position	optional
Mode of operation	Double-acting
Gripper function	Parallel
Gripper force back-up	None
Design	Twin piston Guidance Piston gate valve T-shape Rack and pinion
Position detection	Via proximity switch
Total gripping force, opening, 0.6MPa (6bar, 87 psi)	2466 N
Total gripping force, closing, 0.6MPa (6bar, 87 psi)	2742 N
Operating pressure	3 bar...8 bar
Max. operating frequency of gripper	1 Hz
Min. opening time at 0.6 MPa (6 bar, 87 psi)	1020 ms
Min. closing time at 0.6 MPa (6 bar, 87 psi)	850 ms
Max. mass per external gripper finger	940 g
Operating medium	Compressed air to ISO 8573-1:2010 [7:4:4]
Note on operating and pilot medium	Lubricated operation possible (in which case lubricated operation will always be required)
Corrosion resistance class CRC	2 - Moderate corrosion stress
LABS (PWIS) conformity	VDMA24364-B1/B2-L
Ambient temperature	5 °C...60 °C
Gripper force per gripper jaw, opening, 0.6 MPa (6 bar, 87 psi)	1233 N

Feature	Value
Gripper force per gripper jaw, closing, 0.6 MPa (6 bar, 87 psi)	1371 N
Mass moment of inertia	2247.54 kgcm ²
Max. force on gripper jaw Fz static	9000 N
Max. torque at gripper Mx static	300 Nm
Max. torque at gripper My static	200 Nm
Max. torque at gripper Mz static	250 Nm
Lubrication interval for guide components	5 MioCyc
Product weight	18100 g
Type of mounting	Via female thread and centring sleeve Via through-hole and centring sleeve
Pneumatic connection	G1/8
Note on materials	RoHS-compliant
Material housing	Smooth-anodised wrought aluminium alloy
Material gripper jaws	Hardened steel