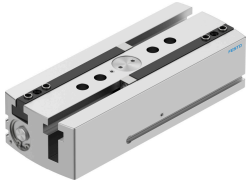


Parallel gripper HGPL-25-80-A-B

Part number: 3361486

FESTO



Data sheet

Feature	Value
Size	25
Stroke per gripper jaws	80 mm
Max. replacement accuracy	0.2 mm
Max. angular gripper jaw backlash ax, ay	0.2 deg
Max. gripper jaw backlash Sz	0.05 mm
Rotationally symmetrical	0.2 mm
Repetition accuracy, gripper	0.03 mm
Number of gripper jaws	2
Drive system	Pneumatic
Mounting position	optional
Mode of operation	Double-acting
Gripper function	Parallel
Gripper force back-up	None
Design	Twin piston Guidance Piston gate valve T-shape Rack and pinion
Position detection	Via proximity switch
Total gripping force, opening, 0.6MPa (6bar, 87 psi)	412 N
Total gripping force, closing, 0.6MPa (6bar, 87 psi)	512 N
Operating pressure	3 bar...8 bar
Max. operating frequency of gripper	1 Hz
Min. opening time at 0.6 MPa (6 bar, 87 psi)	423 ms
Min. closing time at 0.6 MPa (6 bar, 87 psi)	418 ms
Max. mass per external gripper finger	250 g
Operating medium	Compressed air to ISO 8573-1:2010 [7:4:4]
Note on operating and pilot medium	Lubricated operation possible (in which case lubricated operation will always be required)
Corrosion resistance class CRC	2 - Moderate corrosion stress
LABS (PWIS) conformity	VDMA24364-B1/B2-L
Ambient temperature	5 °C...60 °C
Gripper force per gripper jaw, opening, 0.6 MPa (6 bar, 87 psi)	206 N

Feature	Value
Gripper force per gripper jaw, closing, 0.6 MPa (6 bar, 87 psi)	256 N
Mass moment of inertia	78.7 kgcm ²
Max. force on gripper jaw Fz static	1500 N
Max. torque at gripper Mx static	100 Nm
Max. torque at gripper My static	60 Nm
Max. torque at gripper Mz static	70 Nm
Lubrication interval for guide components	5 MioCyc
Product weight	2200 g
Type of mounting	Via female thread and centring sleeve Via through-hole and centring sleeve
Pneumatic connection	M5
Note on materials	RoHS-compliant
Material housing	Smooth-anodised wrought aluminium alloy
Material gripper jaws	Hardened steel