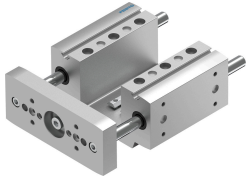


# Guide unit EAGF-P1-KF-40-50

Part number: 3192955

FESTO



## Data sheet

Feature	Value
Size	40
Stroke	50 mm
Reversing backlash theoretical	0 $\mu$ m
Mounting position	optional
Guide	Recirculating ball bearing guide
Design	Guidance
Max. acceleration	25 m/s <sup>2</sup>
Max. speed	1 m/s
Corrosion resistance class CRC	0 - No corrosion stress
LABS (PWIS) conformity	VDMA24364-B2-L
Degree of protection	IP40
Ambient temperature	0 °C...50 °C
Max. force F <sub>y</sub>	380 N
Max. force F <sub>y</sub> static	510 N
Max. force F <sub>z</sub>	380 N
Max. force F <sub>z</sub> static	510 N
Max. moment M <sub>x</sub>	20 Nm
Max. torque M <sub>x</sub> static	27 Nm
Max. moment M <sub>y</sub>	15 Nm
Max. torque M <sub>y</sub> static	20 Nm
Max. moment M <sub>z</sub>	15 Nm
Max. torque M <sub>z</sub> static	20 Nm
Displacement force	6 N
Moving mass for 0 mm stroke	560 g
Basic weight for 0 mm stroke	1910 g
Additional weight per 10 mm stroke	18 g
Additional moving mass per 10 mm stroke	18 g
Centre of gravity at 0 mm stroke	36 mm
Centre of gravity additional of moving mass per 10 mm	4.5 mm
Type of mounting	Via female thread
Note on materials	RoHS-compliant

<b>Feature</b>	<b>Value</b>
Material guide component	Tempered steel Hard-chrome-plated
Material housing	Wrought aluminium alloy Anodised
Material yoke plate	Wrought aluminium alloy Anodised