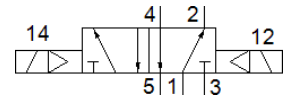
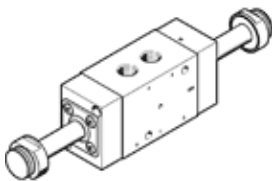


basic valve

VOFC-L-B52-G14-F9-A

Part number: 2820407

FESTO



Data sheet

Feature	Value
Valve function	5/2 bistable
Type of actuation	electrical
Width	40 mm
Standard nominal flow rate	850 l/min
Operating pressure	2 ... 8 bar
Design structure	Soft-switching spool valve
Protection class	IP65
Nominal size	6 mm
Sealing principle	soft
Assembly position	Any
Manual override	None
Type of piloting	Piloted
Pilot air supply	Internal
Flow direction	non reversible
Safety Integrity Level (SIL)	up to SIL 2 high demand mode Product can be used in SRP/CS up to SIL 2 low demand
Flow rate Kv ventilation	0.65 m ³ /h
Flow rate Kv exhaust	0.65 m ³ /h
Maximum switching frequency	1 Hz
Switching time off	20 ms
Switching time on	< 1,000 ms
Duty cycle	100%
Operating medium	Compressed air in accordance with ISO8573-1:2010 [-:::]
Corrosion resistance classification CRC	4
Medium temperature	-25 ... 60 °C
Ambient temperature	-25 ... 60 °C
Product weight	670 g
Pneumatic connection, port 1	G1/4
Pneumatic connection, port 2	G1/4
Pneumatic connection, port 3	G1/4
Pneumatic connection, port 4	G1/4
Materials note	Contains PWIS substances Conforms to RoHS
Materials information for seals	NBR
Materials information, housing	Aluminium Hard Ematal plated