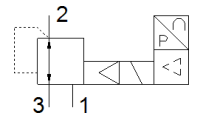
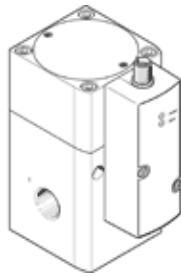


# proportional pressure regulator VPPX-12L-L-1-G12-0L10H-S1

Part number: 2448444

FESTO



## Data sheet

Feature	Value
Nominal diameter, pressurisation	12 mm
Nominal diameter, exhaust	12 mm
Type of actuation	electrical
Sealing principle	soft
Assembly position	Any
Design structure	Pilot actuated diaphragm regulator
Short circuit strength	for all electrical connections
Safety instructions	Safety position VPPX
Polarity protected	for all electrical connections
Type of reset	mechanical spring
Type of piloting	Piloted
Valve function	3-way proportional-pressure regulator
Type of display	LED
Pressure regulation range	0.1 ... 10 bar
Inlet pressure 1	0 ... 11 bar
Max. pressure hysteresis	0.05 bar
Standard nominal flow rate	7,000 l/min
Operating voltage range DC	21.6 ... 26.4 V
Max. current consumption	500 mA
Duty cycle	100 %
Max. electrical power consumption	12 W
Residual ripple	10 %
Signal range, analogue output	0 - 10 V 0 - 20 mA 4 - 20 mA
Signal range, analogue input	0 - 10 V 4 - 20 mA 0 - 20 mA
Operating medium	Compressed air in accordance with ISO8573-1:2010 [7:4:4] Inert gases
Note on operating and pilot medium	Lubricated operation not possible
Authorisation	RCM Mark c UL us - Listed (OL)
KC mark	KC-EMV
CE mark (see declaration of conformity)	to EU directive for EMC in accordance with EU RoHS directive
UKCA marking (see declaration of conformity)	To UK instructions for EMC To UK RoHS instructions
Certificate issuing department	UL E322346
Corrosion resistance classification CRC	2 - Moderate corrosion stress
PWIS conformity	VDMA24364-B1/B2-L
Medium temperature	10 ... 50 °C
Protection class	IP65
Ambient temperature	0 ... 60 °C
Product weight	2,050 g
Temperature coefficient	0.04 %/K

Feature	Value
FS repetition accuracy	0.5 %
Repetition accuracy in $\pm$ %FS	0.5 %FS
Electrical connection	8-pin M12 Plug
Mounting type	with through hole with accessories Optional
Pneumatic connection, port 1	G1/2
Pneumatic connection, port 2	G1/2
Pneumatic connection, port 3	G1/2
Materials note	Conforms to RoHS
Material housing	Wrought Aluminium alloy Anodised