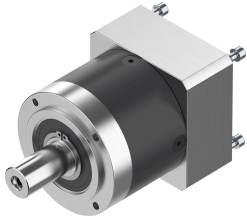


Gear unit EMGA-80-P-G3-EAS-80

Part number: 2297690

FESTO



Data sheet

| Feature | Value |
|-------------------------------------|------------------------|
| Gear unit flange size | 80 mm |
| Motor flange size | 80 mm |
| Torsional backlash | 0.12 deg |
| Type of gear unit | Planetary gear |
| Gear unit ratio | 3:1 |
| Max. drive speed | 7000 rpm |
| Operating temperature of gear unit | -25 °C...90 °C |
| LABS (PWIS) conformity | VDMA24364-B2-L |
| Degree of protection | IP54 |
| Continuous output torque | 85 Nm |
| Mass moment of inertia of gear unit | 0.77 kgcm ² |
| Max. output torque | 136 Nm |
| Max. efficiency | 98 % |
| Torsional rigidity | 6 Nm/arcmin |
| Product weight | 2000 g |
| Gear unit interface, output shaft | 80G |
| Gear unit interface, drive shaft | 80P |
| Note on materials | RoHS-compliant |