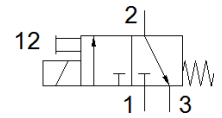
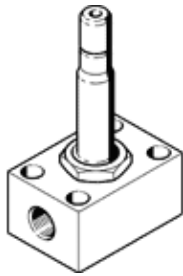


# solenoid valve

## MCH-3-1/8

Part number: 2199

FESTO



## Data sheet

Feature	Value
Valve function	3/2 closed, monostable
Type of actuation	electrical
Standard nominal flow rate	160 l/min
Operating pressure MPa	0 ... 0.7 MPa
Operating pressure	0 ... 7 bar
Design structure	Poppet valve with spring return
Type of reset	mechanical spring
Protection class	IP65
Nominal size	2.5 mm
Sealing principle	soft
Manual override	detenting
Type of piloting	direct
Flow direction	non reversible
Switching time off	13 ms
Switching time on	12 ms
Duty cycle	100 %
Characteristic coil data	110 V AC: 50/60 Hz, pick-up power 30 VA, holding power 22 VA 110 V DC: 12.7 W 120 V AC: 60 Hz, pick-up power 30 VA, holding power 22 VA 12 V AC: 50 Hz, pick-up power 30 VA, holding power 22 VA 12 V DC: 11.7 W 200 V AC: 50/60 Hz, pick-up power 30 VA, holding power 22 VA 220 V DC: 15 W 240 V AC: 50 Hz, pick-up power 30 VA, holding power 22 VA 240 V DC: 17.9 W 24 V AC: 50 Hz, pick-up power 30 VA, holding power 22 VA 24 V DC: 11 W 380 V AC: 50/60 Hz, pick-up power 30 VA, holding power 22 VA 42 V AC: 50/60 Hz, pick-up power 30 VA, holding power 22 VA 42 V DC: 12 W 48 V AC: 50 Hz, pick-up power 30 VA, holding power 22 VA 96 V DC: 11 W
Operating medium	Compressed air in accordance with ISO8573-1:2010 [7:4:4]
PWIS conformity	VDMA24364-C1-L
Storage temperature	-40 ... 100 °C
Medium temperature	-10 ... 60 °C
Ambient temperature	-5 ... 40 °C
Mounting type	with through hole
Pneumatic connection, port 1	G1/8
Pneumatic connection, port 2	G1/8
Pneumatic connection, port 3	G1/8
Materials note	Conforms to RoHS