

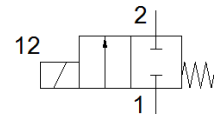
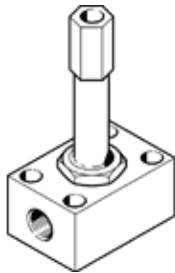
# solenoid valve

## MC-2-1/8

Part number: 2187

FESTO

This type is suitable for vacuum.



## Data sheet

Feature	Value
Valve function	2/2 closed, monostable
Type of actuation	electrical
Standard nominal flow rate	300 l/min
Operating pressure MPa	-0.095 ... 0.7 MPa
Operating pressure	-0.95 ... 7 bar
Design structure	Poppet valve with spring return
Type of reset	mechanical spring
Protection class	IP65
Nominal size	4 mm
Sealing principle	soft
Manual override	None
Type of piloting	direct
Flow direction	non reversible
Switching time off	20 ms
Switching time on	18 ms
Duty cycle	100 %
Characteristic coil data	110 V AC: 50/60 Hz, pick-up power 30 VA, holding power 22 VA 110 V DC: 12.7 W 120 V AC: 60 Hz, pick-up power 30 VA, holding power 22 VA 12 V AC: 50 Hz, pick-up power 30 VA, holding power 22 VA 12 V DC: 11.7 W 200 V AC: 50/60 Hz, pick-up power 30 VA, holding power 22 VA 220 V DC: 15 W 240 V AC: 50 Hz, pick-up power 30 VA, holding power 22 VA 240 V DC: 17.9 W 24 V AC: 50 Hz, pick-up power 30 VA, holding power 22 VA 24 V DC: 11 W 380 V AC: 50/60 Hz, pick-up power 30 VA, holding power 22 VA 42 V AC: 50/60 Hz, pick-up power 30 VA, holding power 22 VA 42 V DC: 12 W 48 V AC: 50 Hz, pick-up power 30 VA, holding power 22 VA 96 V DC: 11 W
Operating medium	Compressed air in accordance with ISO8573-1:2010 [7:4:4]
PWIS conformity	VDMA24364-C1-L
Storage temperature	-40 ... 100 °C
Medium temperature	-10 ... 60 °C
Ambient temperature	-5 ... 40 °C
Mounting type	with through hole
Pneumatic connection, port 1	G1/8
Pneumatic connection, port 2	G1/8
Materials note	Conforms to RoHS