

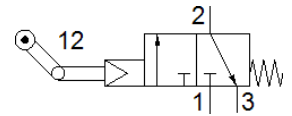
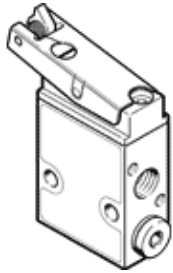
# toggle lever valve

## LS-3-1/8

Part number: 2186

FESTO

With idle return, piloted, normally closed.



## Data sheet

| Feature                                 | Value                                                                       |
|-----------------------------------------|-----------------------------------------------------------------------------|
| Valve function                          | 3/2 closed, monostable                                                      |
| Type of actuation                       | mechanical                                                                  |
| Standard nominal flow rate              | 146 l/min                                                                   |
| Operating pressure MPa                  | 0.35 ... 0.8 MPa                                                            |
| Operating pressure                      | 3.5 ... 8 bar                                                               |
| Design structure                        | Poppet seat                                                                 |
| Type of reset                           | mechanical spring                                                           |
| Nominal size                            | 3.5 mm                                                                      |
| Exhaust-air function                    | throttleable                                                                |
| Sealing principle                       | soft                                                                        |
| Assembly position                       | Any                                                                         |
| Type of piloting                        | Piloted                                                                     |
| Pilot air supply                        | Internal                                                                    |
| Flow direction                          | non reversible                                                              |
| Pilot medium                            | Compressed air in accordance with ISO8573-1:2010 [-::-]                     |
| Note on forced dynamisation             | Switching frequency min. 1/year                                             |
| Operating medium                        | Compressed air in accordance with ISO8573-1:2010 [-::-]                     |
| Note on operating and pilot medium      | Lubricated operation possible (subsequently required for further operation) |
| Corrosion resistance classification CRC | 2 - Moderate corrosion stress                                               |
| PWIS conformity                         | VDMA24364-B1/B2-L                                                           |
| Medium temperature                      | -10 ... 60 °C                                                               |
| Ambient temperature                     | -10 ... 60 °C                                                               |
| Actuating force                         | 1.67 N                                                                      |
| Product weight                          | 110 g                                                                       |
| Mounting type                           | with through hole                                                           |
| Pneumatic connection, port 1            | G1/8                                                                        |
| Pneumatic connection, port 2            | G1/8                                                                        |
| Pneumatic connection, port 3            | G1/8                                                                        |
| Materials note                          | Conforms to RoHS                                                            |
| Material seals                          | NBR                                                                         |
| Material housing                        | Aluminium<br>Anodised                                                       |