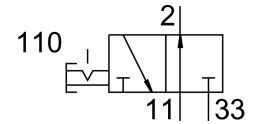


Shut-off valve HE-G1/2-LO

Part number: 197134

FESTO



Data sheet

Feature	Value
Design	Piston gate valve
Type of actuation	Manual
Sealing principle	Soft
Exhaust-air function	Without flow control option
Manual override	None
Valve function	3/2 double solenoid
Operating pressure	1 bar...10 bar
C value	28.13 l/sbar
b value	0.28
Standard nominal flow rate	6200 l/min
Operating medium	Compressed air to ISO 8573-1:2010 [7:4:4]
Corrosion resistance class CRC	3 - high corrosion stress
LABS (PWIS) conformity	VDMA24364-B1/B2-L
Media temperature	-10 °C...60 °C
Ambient temperature	-10 °C...60 °C
Type of mounting	In-line installation With through-hole
Mounting position	optional
Flow direction	Non-reversible
Product weight	1100 g
Pneumatic connection, port 1	G1/2
Pneumatic connection, port 2	G1/2
Pneumatic connection, port 3	G1
Material seals	NBR TPE-U(PU)
Material housing	Die-cast aluminium PBT