

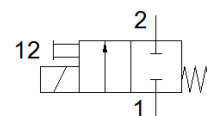
# solenoid valve

## MHP1-M1H-2/2G-M3-TC

Part number: 197050

FESTO

Semi in-line valve for individual and manifold mounting, very compact, with plug connector on top



## Data sheet

| Feature                                 | Value  |
|---|--|
| Valve function                          | 2/2 closed, monostable   |
| Type of actuation                       | electrical   |
| Width                                   | 10 mm  |
| Standard nominal flow rate              | 14 l/min   |
| Operating pressure MPa                  | -0.09 ... 0.2 MPa  |
| Operating pressure                      | -0.9 ... 2 bar<br>-13.05 ... 29 psi  |
| Design structure                        | Poppet valve with spring return  |
| Type of reset                           | mechanical spring  |
| Protection class                        | IP40   |
| Authorisation                           | c UL us - Recognized (OL)  |
| Certificate issuing department          | UL MH19482   |
| Nominal size                            | 0.9 mm   |
| Grid dimension                          | 10 mm  |
| Exhaust-air function                    | not throttleable   |
| Sealing principle                       | soft   |
| Assembly position                       | Any  |
| Manual override                         | Pushing  |
| Type of piloting                        | direct   |
| Flow direction                          | non reversible   |
| Valve position identification           | Label  |
| Overlap                                 | Underlap   |
| Note on forced dynamisation             | Switching frequency at least once a week   |
| Suitability for vacuum                  | Yes  |
| Maximum switching frequency             | 20 Hz  |
| Switching time off                      | 5 ms   |
| Switching time on                       | 4 ms   |
| Duty cycle                              | 100 %  |
| Electrical power consumption            | 1 W  |
| Max. positive test pulse with logic 0   | 500 µs   |
| Max. negative test pulse with logic 1   | 400 µs   |
| Characteristic coil data                | 24 V DC: 1 W   |
| Permissible voltage fluctuation         | +/- 10 %   |
| Operating medium                        | Compressed air in accordance with ISO8573-1:2010 [7:4:4]                                       |
| Note on operating and pilot medium      | Lubricated operation possible (subsequently required for further operation)                    |
| Vibration resistance                    | Transport application test at severity level 2 in accordance with FN 942017-4 and EN 60068-2-6 |
| Shock resistance                        | Shock test with severity level 2 in accordance with FN 942017-5 and EN 60068-2-27              |
| Corrosion resistance classification CRC | 2 - Moderate corrosion stress  |
| PWIS conformity                         | VDMA24364-B2-L   |
| Storage temperature                     | -20 ... 60 °C  |

| Feature                      | Value                            |
|------------------------------|----------------------------------|
| Medium temperature           | -5 ... 40 °C                     |
| Ambient temperature          | -5 ... 40 °C                     |
| Product weight               | 10 g                             |
| Electrical connection        | Plug                             |
| Mounting type                | On sub-base<br>with through hole |
| Pneumatic connection, port 1 | Sub-base                         |
| Pneumatic connection, port 2 | M3                               |
| Materials note               | Conforms to RoHS                 |
| Material seals               | FPM<br>HNBR<br>NBR               |
| Material housing             | PA-reinforced<br>PPS-reinforced  |