

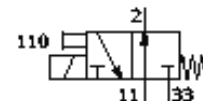
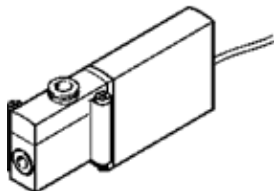
# Solenoid valve

## MHP2-MS1H-3/20-QS-4-K

Part number: 196149

FESTO

individual valve, fast switching, with cable.  
Discontinued, available through 2007



## Data sheet

Feature	Value
Valve function	3/2 open, single solenoid
Type of actuation	electrical
Width	10 mm
Standard nominal flow rate	100 l/min
Pneumatic working line	QS-4
Operating voltage	24V DC
Operating pressure	-0.9 ... 8 bar
Design structure	Pressure-relieved poppet valve
Type of reset	mechanical spring
Protection class	IP65
Authorisation	c UL us - Recognized (OL)
Nominal size	2 mm
Grid dimension	14 mm
Exhaust-air function	throttleable
Sealing principle	soft
Assembly position	Any
Manual override	Pushing
Type of piloting	direct
Flow direction	reversible with restrictions
Operating pressure, reversible	-0.9 ... 0 bar
Maximum switching frequency	330 Hz
Switching time off	2 ms
Switching time on	1.7 ms
Measuring of the switching time at 1 Hz and above	0.2 ms
Duty cycle	100%
Characteristic coil data	24 V DC: low current phase: 1.25 W, high current phase: 5 W
Permissible voltage fluctuation	+/- 10 %
Operating medium	Filtered, unlubricated compressed air, 40 µm filtration Filtered, lubricated compressed air, 40 µm filtration
CE symbol (see declaration of conformity)	according to EU-EMV guideline
Restriction ambient and medium temperature	related to switching frequency
Corrosion resistance classification CRC	2
Medium temperature	-5 ... 40 °C
Ambient temperature	-5 ... 40 °C
Product weight	60 g
Electrical connection	Cable
Cable length	2.5 m
Mounting type	On PR manifold
Pneumatic connection, 11	Sub-base
Pneumatic connection, port 2	QS-4
Pneumatic connection, 33	Sub-base
Materials note	Free of copper and PTFE
Materials information for seals	HNBR

Feature	Value
	NBR
Materials information, housing	Zinc die-casting coated
Materials information, cable sheaths	PUR
Screw material data	Steel Galvanised