

service unit

LFRS-3/4-D-DI-MAXI-KF

Part number: 195200

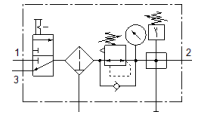
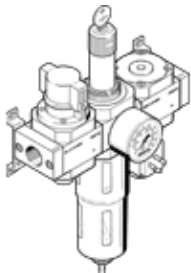
Classic - do not use for new projects



With lockable regulator head and pressure gauge, for nominal pressure 12 bar, for unlubricated compressed air.

Modern alternatives can be found by entering the first four characters of the type code in the search field.

Type to be discontinued. Available until 2022. See Support Portal for alternative products.



Data sheet

Feature	Value
Size	Maxi
Series	D
Actuator lock	Rotary knob with integrated lock
Assembly position	Vertical +/- 5°
Grade of filtration	40 µm
Condensate drain	manual rotary
Design structure	Branching module Pressure sensor On/off valve Filter regulator with pressure gauge
Max. condensate volume	43 cm ³
Bowl guard	Metal bowl guard
Pressure gauge	with pressure gauge
Operating pressure	1 ... 16 bar
Pressure regulation range	0.5 ... 12 bar
Standard nominal flow rate	6,000 l/min
Operating medium	Compressed air in accordance with ISO8573-1:2010 [-:-:-] Inert gases
Corrosion resistance classification CRC	2 - Moderate corrosion stress
Air purity class at output	Compressed air in accordance with ISO8573-1:2010 [6:8:4] Inert gases
Medium temperature	-10 ... 60 °C
Ambient temperature	-10 ... 60 °C
Product weight	3,740 g
Mounting type	Line installation with accessories Optional
Pneumatic connection, port 1	G3/4
Pneumatic connection, port 2	G3/4
Material housing	Zinc die-casting
Material bowl	PC