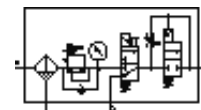
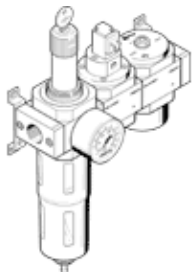


Service unit combination LFRS-1/2-D-DI-MAXI-KD-A

Part number: 195183

FESTO

With lockable regulator head and pressure gauge, for nominal pressure 12 bar, for unlubricated compressed air.



Data sheet

| Feature | Value |
|---|---|
| Size | Maxi |
| Series | D |
| Actuator lock | Rotary knob with integrated lock |
| Assembly position | Vertical +/- 5° |
| Grade of filtration | 40 µm |
| Condensate drain | fully automatic |
| Design structure | On/off valve Filter regulator with pressure gauge Safety start-up valve |
| Max. condensate volume | 43 cm ³ |
| Bowl guard | Metal bowl guard |
| Pressure gauge | with pressure gauge |
| Pressure control range | 2.5 ... 12 bar |
| Inlet pressure 1 | 3 ... 12 bar |
| Standard nominal flow rate | 3,000 l/min |
| Operating medium | Compressed air |
| Corrosion resistance classification CRC | 2 |
| Medium temperature | -10 ... 60 °C |
| Ambient temperature | -10 ... 60 °C |
| Product weight | 3,540 g |
| Mounting type | Optional Line installation with accessories |
| Pneumatic connection, port 1 | G1/2 |
| Pneumatic connection, port 2 | G1/2 |
| Materials information, housing | Zinc die-casting |
| Materials information for bowl | PC |