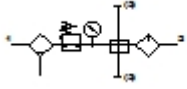


FRCS-1/2-D-MAXI-KA

Service unit combination

| Feature | Data/description |
|----------------------------|---|
| Size | Maxi |
| Series | D |
| Actuator lock | Rotary knob with integrated lock |
| Assembly position | Vertical +/- 5° |
| Grade of filtration | 40 µm |
| Condensate drain | manual rotary |
| Design structure | Branching module Filter regulator with pressure gauge Proportional standard oil-mist lubricator |
| Max. condensate volume | 80 cm ³ |
| Bowl guard | Metal bowl guard |
| Pressure gauge | with pressure gauge |
| Output pressure 3 | 0,5 - 12 bar |
| Output pressure 4 | 0,5 - 12 bar |
| Pressure control range | 0,5 - 12 bar |
| Inlet pressure 1 | 1 - 16 bar |
| Max. pressure hysteresis | 0,1 bar |
| Standard nominal flow rate | 7.500 l/min |
| Operating medium | Compressed air |
| Medium temperature | -10 - 60 °C |
| Ambient temperature | -10 - 60 °C |
| Product weight | 3.600 g |
| Mounting type | Optional Line installation with accessories |



FRCS-1/2-D-MAXI-KA

Service unit combination

| Feature | Data/description |
|--------------------------------|------------------|
| Pneumatic connection, port 1 | G1/2 |
| Pneumatic connection, port 2 | G1/2 |
| Pneumatic connection, port 3 | G3/4 |
| Pneumatic connection, port 4 | G1/4 |
| Materials information, housing | Zinc die-casting |
| Materials information for bowl | PC |