

# filter regulator LFRS-1/2-D-O-MAXI

Part number: 194782

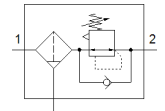
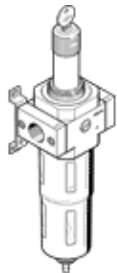
Classic - do not use for new projects

FESTO

With lockable regulator head, without pressure gauge, for a nominal pressure of 12 bar, for unlubricated compressed air

Modern alternatives can be found by entering the first four characters of the type code in the search field.

Type to be discontinued. Available until 2022. See Support Portal for alternative products.



## Data sheet

| Feature                                 | Value   |
|---|---|
| Size                                    | Maxi  |
| Series                                  | D   |
| Actuator lock                           | Rotary knob with integrated lock  |
| Assembly position                       | Vertical +/- 5°   |
| Grade of filtration                     | 40 µm   |
| Condensate drain                        | manual rotary   |
| Design structure                        | Filter regulator without pressure gauge                                     |
| Max. condensate volume                  | 80 cm <sup>3</sup>  |
| Bowl guard                              | Metal bowl guard  |
| Pressure gauge                          | Prepared for G1/4   |
| Operating pressure                      | 1 ... 16 bar  |
| Pressure regulation range               | 0.5 ... 12 bar  |
| Max. pressure hysteresis                | 0.4 bar   |
| Standard nominal flow rate              | 9,400 l/min   |
| Operating medium                        | Compressed air to ISO 8573-1:2010 [-:9:-]<br>Inert gases                    |
| Note on operating and pilot medium      | Lubricated operation possible (subsequently required for further operation) |
| Corrosion resistance classification CRC | 2 - Moderate corrosion stress   |
| Storage temperature                     | -10 ... 60 °C   |
| Air purity class at output              | Compressed air in accordance with ISO8573-1:2010 [7:8:4]<br>Inert gases     |
| Medium temperature                      | -10 ... 60 °C   |
| Ambient temperature                     | -10 ... 60 °C   |
| Product weight                          | 1,400 g   |
| Mounting type                           | Line installation<br>with accessories<br>Optional                           |
| Pneumatic connection, port 1            | G1/2  |
| Pneumatic connection, port 2            | G1/2  |
| Materials note                          | Conforms to RoHS  |
| Material housing                        | Zinc die-casting  |
| Material bowl                           | PC  |