

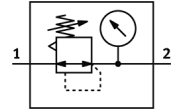
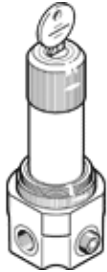
# Pressure regulator

## LRS-1/8-G

Part number: 194694  
 Product to be discontinued

FESTO

Without pressure gauge, with lockable regulator head.  
 Type to be discontinued. Available until 2014. See Support Portal for alternative products.



### Data sheet

Feature	Value
Actuator lock	Rotary knob with integrated lock
Assembly position	Any
Controller function	Output pressure constant with initial pressure compensation with secondary exhaust
Pressure gauge	G1/8" prepared
Operating pressure	1 ... 20 bar
Pressure control range	0.5 ... 12 bar
Max. pressure hysteresis	0.2 bar
Standard nominal flow rate	600 l/min
Operating medium	Compressed air in accordance with ISO8573-1:2010 [7:4:4]
Note on operating and pilot medium	Lubricated operation possible (subsequently required for further operation)
Medium temperature	-10 ... 80 °C
Ambient temperature	-10 ... 80 °C
Product weight	420 g
Mounting type	Front panel installation Line installation with accessories
Pneumatic connection, port 1	G1/8
Pneumatic connection, port 2	G1/8
Materials information for seals	NBR
Materials information, housing	Brass