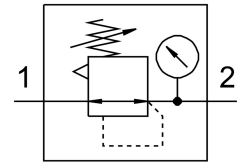


# Pressure regulator LRS-1/8-D-7-MINI

Part number: 194606

FESTO



## Data sheet

| Feature   | Value  |
|---|--|
| Size  | Mini   |
| Series  | D  |
| Actuator lock   | Rotary knob with integrated lock   |
| Mounting position                                     | optional   |
| Design  | Directly actuated diaphragm regulator  |
| Controller function                                   | Output pressure constant<br>Via primary pressure compensation<br>With secondary venting    |
| Pressure gauge (ANALOG) or Pressure display (DIGITAL) | With pressure gauge  |
| Operating pressure                                    | 1 bar...16 bar   |
| Pressure regulation range                             | 0.5 bar...7 bar  |
| Max. pressure hysteresis                              | 0.2 bar  |
| Standard nominal flow rate                            | 1000 l/min   |
| Operating medium                                      | Compressed air to ISO 8573-1:2010 [7:4:4]<br>Inert gases                                   |
| Note on operating and pilot medium                    | Lubricated operation possible (in which case lubricated operation will always be required) |
| LABS (PWIS) conformity                                | VDMA24364-B1/B2-L  |
| Air purity class at output                            | Compressed air to ISO 8573-1:2010 [7:4:4]<br>Inert gases                                   |
| Media temperature                                     | -10 °C...60 °C   |
| Ambient temperature                                   | -10 °C...60 °C   |
| Product weight  | 520 g  |
| Type of mounting                                      | Front panel mounting<br>In-line installation<br>With accessories                           |
| Pneumatic connection, port 1                          | G1/8   |
| Pneumatic connection, port 2                          | G1/8   |
| Note on materials                                     | RoHS-compliant   |
| Material sub-base                                     | Die-cast zinc  |
| Material seals  | NBR  |
| Material housing                                      | Die-cast zinc  |